



# Update on local NHS Services

Report for Cheshire East Council Health, Adult Social  
Care and Communities Overview and Scrutiny Committee

4 March 2021

**Clare Watson**, Accountable Officer, NHS Cheshire CCG

**James Sumner**, Chief Executive, Mid Cheshire NHS Foundation Trust

**John Wilbraham**, Chief Executive, East Cheshire NHS Trust

**Sheena Cumiskey**, Chief Executive, Cheshire & Wirral Partnership NHS Foundation Trust

# Purpose of Presentation

**Provide Committee members with:**

- update on successful 2020 -21 flu campaign
- a follow up from the September 2020 presentation to OSC on the local health system response to Covid-19 and delivery of the vaccination programme
- an overview of the challenges, changes and successes of partnership working that have taken place during the Covid pandemic
- future plans and developments

***NB – This presentation intentionally gives a high level NHS overview. The presenters are happy to give a more detailed explanation at the meeting of any specific areas of interest.***



# Flu Campaign



**this year's flu campaign has been extremely successful, uptake in all categories is higher than previous years, with one exception.**

**as at 31<sup>st</sup> January, Cheshire CCG was the highest performing CCG in Cheshire & Merseyside for Flu vaccine uptake, as well as exceeding the England and North West performance.**

**there have been very few recorded flu cases nationally this winter, while GP consultations for flu-like symptoms have been low. At the same time no outbreaks have been reported in Cheshire care homes.**

**factors for the exceptionally low flu numbers include:**

- the high uptake of the vaccines
- increased hygiene and social distancing measures to combat COVID-19.

**a combination of flu and Covid-19 would have been very dangerous to individuals and could have overwhelmed the NHS, so it is great news that the public have played such a vital role by getting vaccinated and preventing an outbreak of Influenza.**

# Flu Campaign



Published Flu Data as at 31<sup>st</sup> January 2021

<https://www.gov.uk/government/statistics/seasonal-flu-vaccine-uptake-in-gp-patients-monthly-data-2020-to-2021>

|                                  | 65 & over    | Under 65s<br>at risk | 2 year olds  | 3 year olds  | Pregnant<br>Women |
|----------------------------------|--------------|----------------------|--------------|--------------|-------------------|
| Cheshire East 2019/20            | 77.6%        | 50.9%                | 44.8%        | 50.3%        | 52.1%             |
| <b>Cheshire East 2020/21</b>     | <b>84.9%</b> | <b>58.6%</b>         | <b>65.4%</b> | <b>68.2%</b> | <b>48.6%</b>      |
| NHS Cheshire CCG                 | 84.3%        | 57.6%                | 63%          | 66.6%        | 46.4%             |
| England 2020/21                  | 80.7%        | 52.4%                | 55.1%        | 57.8%        | 43.6%             |
| Cheshire & Merseyside<br>2020/21 | 81.4%        | 52.2%                | 50.7%        | 54.3%        | 40.2%             |

Uptake an  
for 2020/  
at least 7

## Unpublished update as at 26<sup>th</sup> February 2021

Complete monthly data is published at <https://www.gov.uk/government/statistics/seasonal-flu-vaccine-uptake-in-gp-patients-monthly-data-2020-to-2021>

|                              |             |               |   |   |               |
|------------------------------|-------------|---------------|---|---|---------------|
| <b>Cheshire East 2020/21</b> | <b>86 %</b> | <b>80.26%</b> | - | - | <b>53.33%</b> |
|------------------------------|-------------|---------------|---|---|---------------|



# Key Covid-19 headlines



**“delighted to have been called, it was very quick with no queues”**

*Middlewood PCN , Poynton*



**“Don’t worry at all I never felt a thing!”**

*Congleton & Holmes Chapel PCN*



**FIND OUT MORE AT**

**COVID-19 Vaccination Programme – What You Need to Know**

<https://www.cheshireccg.nhs.uk/news/news-stories/covid-19-vaccination-programme-what-you-need-to-know>



**“All of you, every last one of you, come and get your vaccine. It is worth it to save your life and the lives of your friends and neighbours”**

*Crewe GP*



# Key Covid-19 headlines



## National/Regional Targets

- all partners have worked together to ensure rapid and effective roll out of the vaccination program to the residents of Cheshire East in line with national timelines . Many staff re-purposed to focus on delivery.

**25 Jan 2021**

Care home residents/carers to have been *offered* 1<sup>st</sup> dose

**15 Feb 2021**

All priority **cohort 1-4 patients** to have been *offered* 1<sup>st</sup> dose

- **15 April 2021\*** All priority **cohort groups 5-9** patients to have been *offered* 1st dose (on track)

- **31 July 2021\*** All 16-49 year olds to have been *offered* 1st dose (on track)

\*updated 22 February

# Key Covid-19 headlines



## Vaccination site rollout

08 Dec 2020 (CoCH) – 17 February 2021

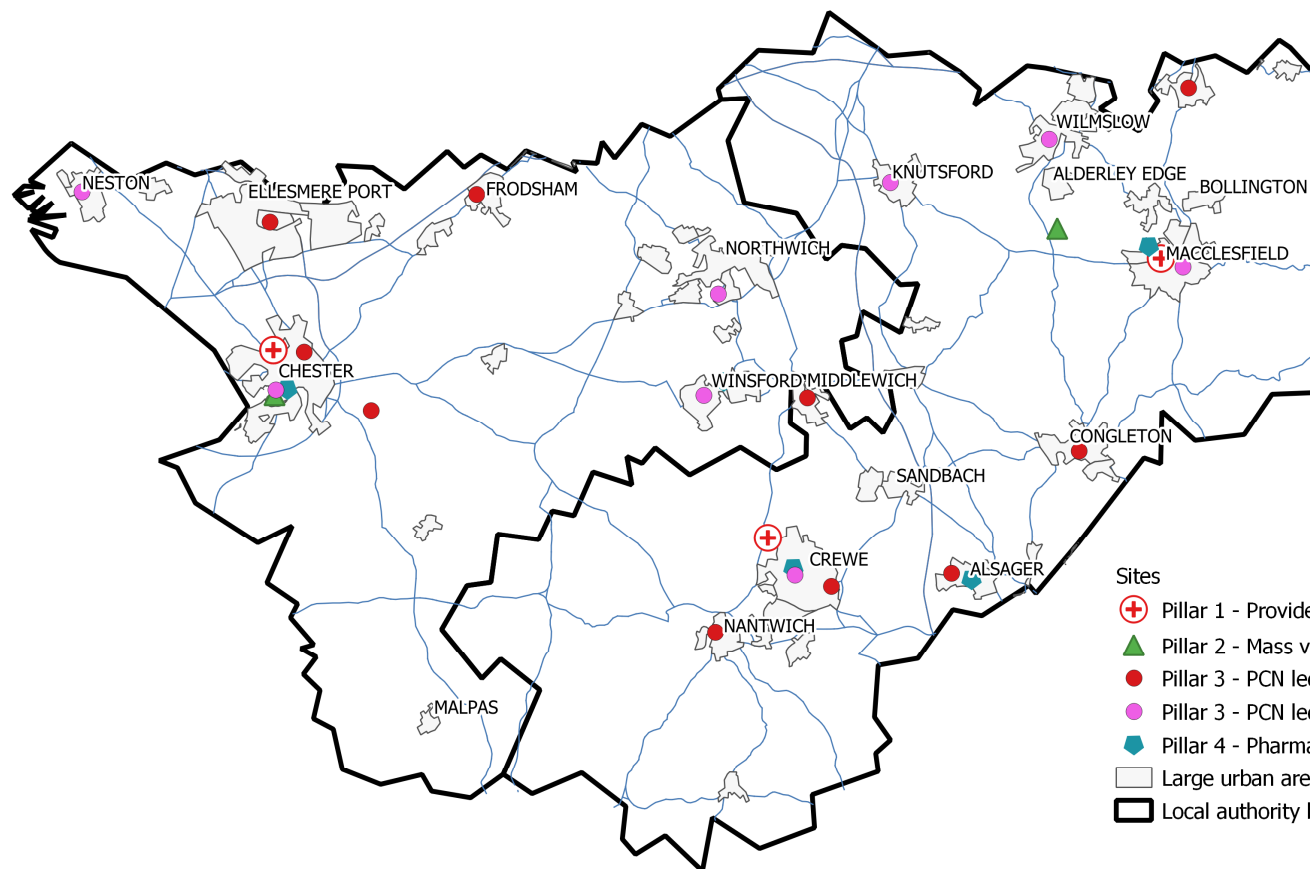
(Alderley Park) - 29 vaccination sites have been established across Cheshire.

**mix of hospital, Pharmacy, GP Led community sites and mass vaccination sites provide comprehensive coverage for our population**

**all frontline staff have been offered vaccination in line with national guidance**

**over 2000 people have signed up to volunteer at sites across Cheshire**

**work underway to identify and engage with marginalised, vulnerable and vaccine-hesitant groups**

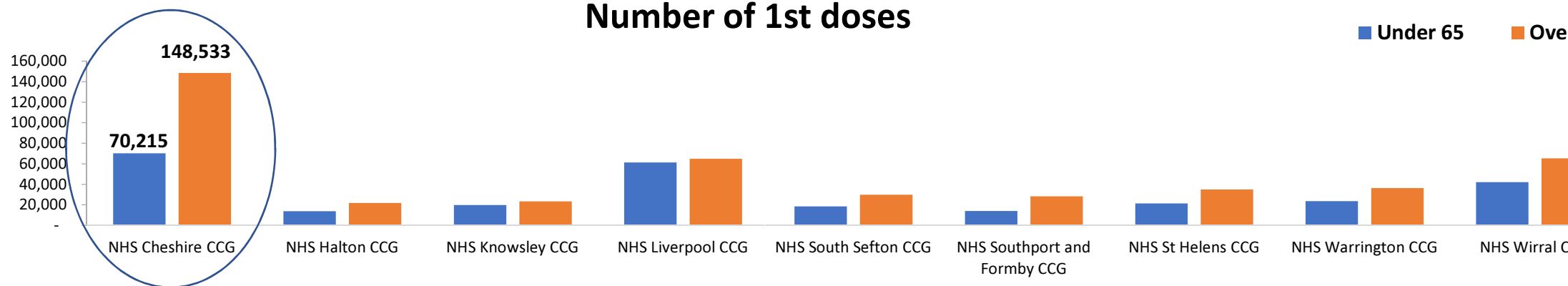


# Key Covid-19 headlines

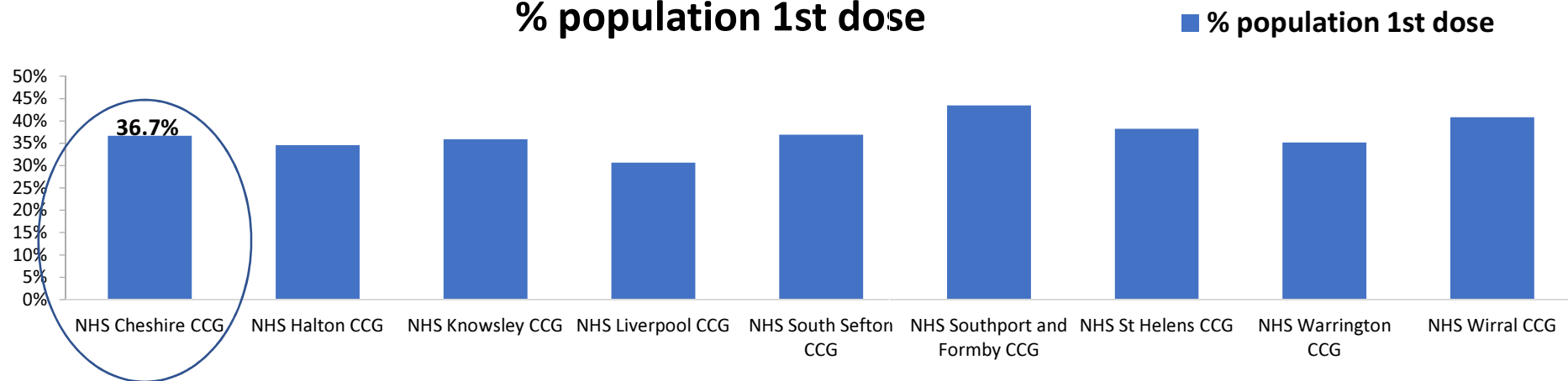


How are we doing? (Data period is 8<sup>th</sup> Dec – 21<sup>st</sup> Feb)

## Number of 1st doses



## % population 1st dose



Data available via NHS England: <https://www.england.nhs.uk/statistics/statistical-work-areas/covid-19-vaccinations/>



# Key Covid-19 headlines

## Why vaccination is so important

Vaccination has been shown to reduce the chance of needing hospital treatment by more than 80% (3-4 weeks after vaccination)

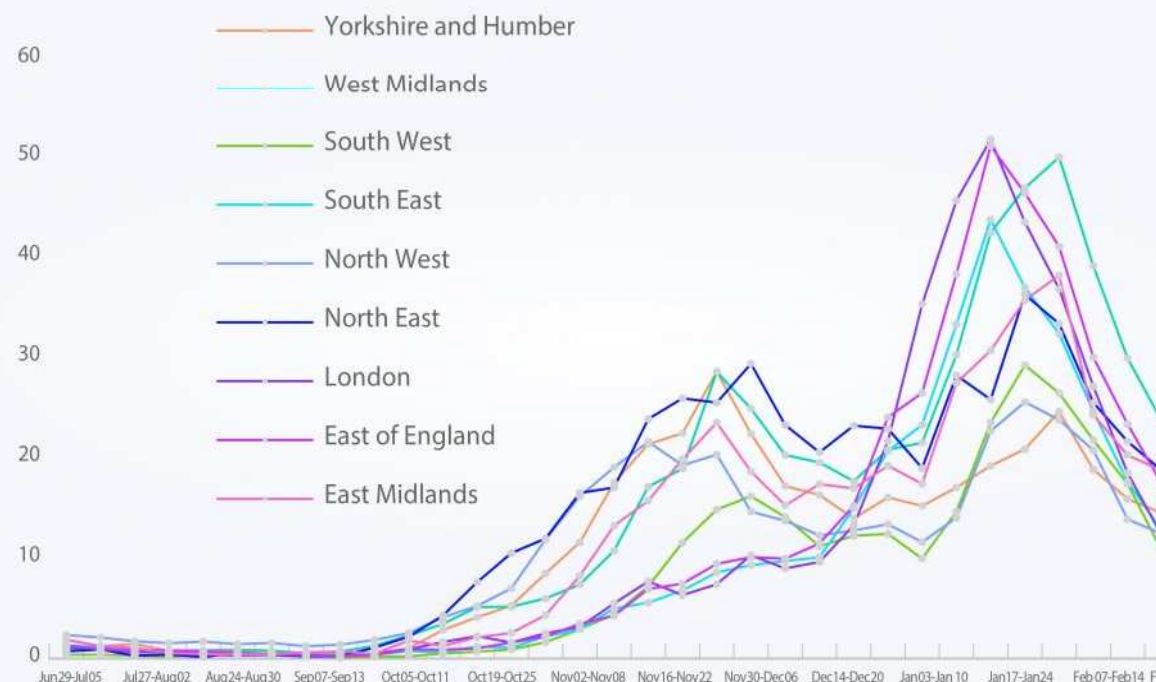
North West has seen the 2<sup>nd</sup> highest cumulative number of cases in England as the 2<sup>nd</sup> wave hit and the highest daily number of cases

North West has had the 2<sup>nd</sup> highest number of deaths per region during the pandemic

North West has had the highest proportion of residents on the NHS shielding list

Number of patients in our hospitals are decreasing, however rate of decline in the region is slower compared to other regions

**Weekly hospital admission rate** per 100,000 population for new COVID-19 positive cases in England



Data from 29 June 2020 to 21 February 2021.

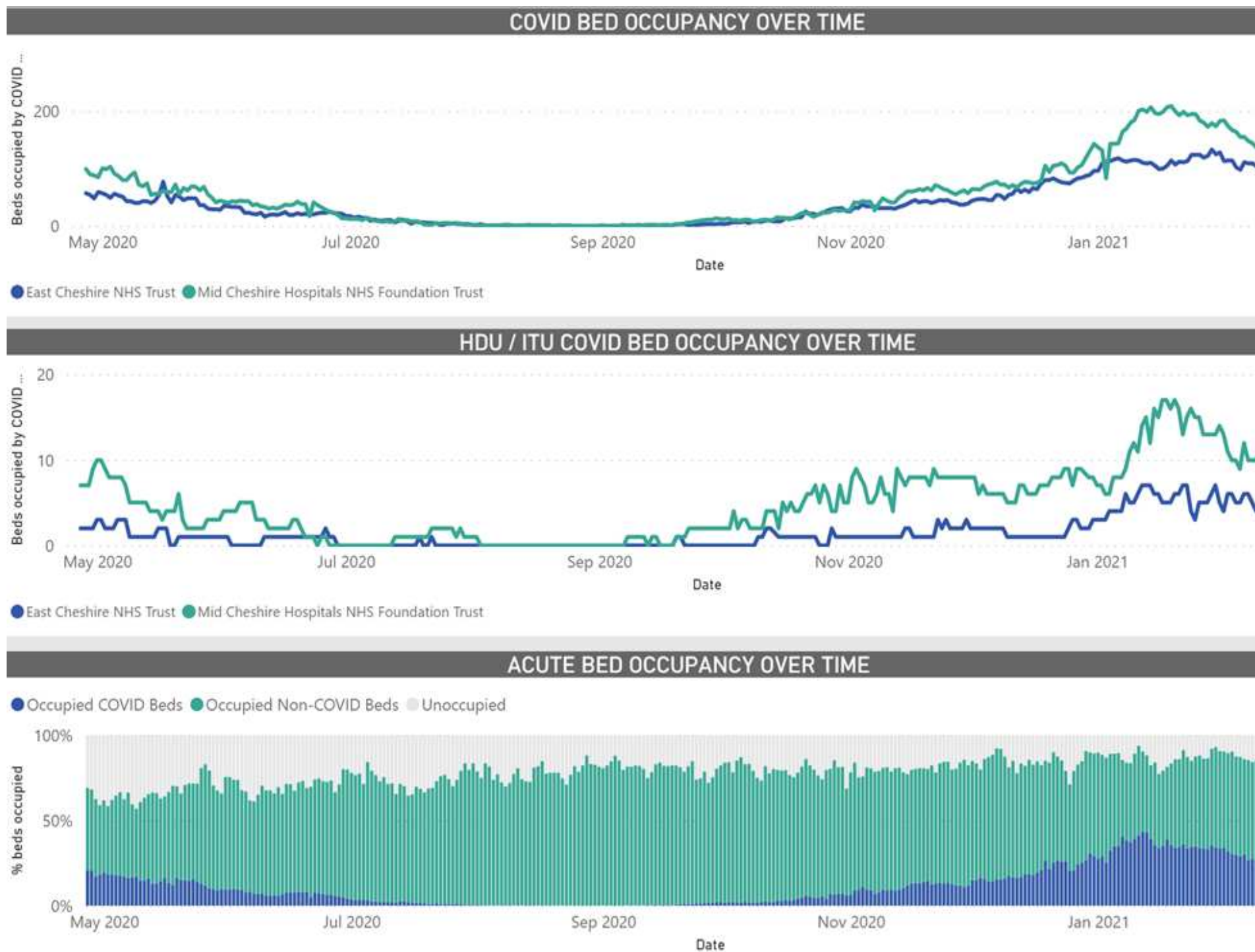
Public Health England

# al ssure

considerable  
pressure on hospitals  
during wave 2 – more  
than Wave 1

logs for non  
d activities,  
ding  
patients,  
agnostics and  
ative surgery

has included  
e cancer patients  
ell as many  
rs awaiting less  
nt but still  
mitating needs  
as hip and knee  
acements



# Current challenges

staff in all sectors have suffered severe distress and exhaustion which needs careful support to prevent as far as possible long term psychological harm

General Practices contacts are as high as ever. Practices have been working hard to continue to see urgent patients but it is recognised that some routine work was delayed in wave 1. There is an ongoing need to catch up on long term condition reviews and proactive care

bed spacing in some ward areas in acute hospitals has been particularly challenging as bed occupancy has increased and discharge flows have been delayed by 48h covid swabbing requirements. Physical layout of wards also a factor. This has also increased waiting times in Emergency Departments for patients with some 12h trolley wait breaches

there has been an increase in demand for specialist mental health care, and both adult and Children's mental health services have seen increased demand. Across all age groups there has been an increase in acuity and the need for people to be treated in hospital.

# Temporary changes in place

- Gold command emergency planning response and control arrangements remain in place
- many consultations remain as virtual via IT solutions. Rehabilitation classes have followed similar with patients undertaking supported activities in their own homes
- additional resources have been allocated to support patients to receive care that is needed including End of Life partnership to support greater levels of bereavement counselling and phlebotomy hours to account for greater numbers of patients who need blood tests out of hospital as well as the extra time for cleaning down chairs and changing PPE between each patient
- CWP is currently providing one short break centre for people with learning disabilities across East Cheshire and Wirral. Crook Lane in East Cheshire is able to take up to two patients at a time from across Cheshire and Wirral.
- designated covid secure elective pathways in hospital wards and theatres
- lateral flow covid testing continues for all frontline staff continued suspension of maternity
- intrapartum care services at Macclesfield

# Temporary changes in place

## Intrapartum care services at Macclesfield

- Given the reduction in Covid cases and the development of the vaccination rollout the safe return of intrapartum care and neo natal care is planned for September 2021.
- A number of the agreed criteria for the safe return have been achieved however issues regarding provision of ICU in a post Covid world requires significant capital work to the ICU which commences in April at a cost of c£2m
- Trust will continue to offer local access to antenatal, post natal and home births as it has done throughout the pandemic period.
- The latest paper presented to East Cheshire Public Trust Board on 4<sup>th</sup> February 2020 gives full details and can be accessed on the trust website or using the following link  
[https://www.eastcheshire.nhs.uk/application/files/8016/1254/1485/01\\_Public\\_Trust\\_Board\\_Agenda\\_and\\_Papers\\_EO\\_February\\_2021\\_-\\_FULL\\_BUNDLE....pdf](https://www.eastcheshire.nhs.uk/application/files/8016/1254/1485/01_Public_Trust_Board_Agenda_and_Papers_EO_February_2021_-_FULL_BUNDLE....pdf)



# Working together

- staff have been redeployed since early December to support acute hospital admissions, swabbing and vaccination programme requirements
- staff have been supporting the Nightingale hospitals to enable non infectious COVID patients to be rehabilitated out of hospital
- Cheshire East ICP have developed and introduced two hot hubs whereby primary care patients with suspected respiratory / COVID conditions can be seen and examined in a single location on each hospital site, the availability of on site diagnostics and links between the hospital and GP for urgent admission
- mutual aid arrangements between Greater Manchester and Cheshire to support critical care pathways
- agreed designated settings out of hospital for covid recovered patients

# Working together

- **Hospital Discharge and Coordination.** System partners are working in an integrated way with a structure based around a Cheshire wide A&E Delivery Board and supporting infrastructure
- “Hospital system” cross system teams have been built around Mid Cheshire and East Cheshire Hospitals comprising of Adult Social Care, CCG, Hospital and Community Providers. This includes a new role called “flight controller” (system oversight and coordination). In Cheshire East this is Dan McCabe from Cheshire East Council
- partners are represented on the regional infrastructure including “out of hospital cell” which allows regional coordination, mutual aid and sharing of good practice
- partners have worked effectively to ensure highly effective discharge capacity and processes from hospital, to mitigate the pressure on hospital bed capacity caused by Covid
- a key focus has been maintained on avoiding unnecessary admissions to hospital with the introduction of
  - NHS 111 First – which identifies alternatives to hospital where available and appropriate
  - Pulse Oximetry and Virtual Ward



# Working together



- **collaborative partnership working has resulted in additional surge capacity being identified and commissioned to ensure the needs of children and young people requiring access to mental health services are met.**
- **this additional capacity allows the Community CAMHS Teams to signpost clinically appropriate referrals to appropriate 3<sup>rd</sup> Sector organisations and strengthens the pathway for children and young people, by enabling a seamless step-up and step-down offer between Community CAMHS and the 3<sup>rd</sup> Sector Offer.**
- **CWP has provided training for the 3<sup>rd</sup> Sector regarding early warning signs of Eating Disorders and OCD and have worked collaboratively with the LA in relation to the Wellbeing Education Return, this has included the introduction of new post drawn from the 3<sup>rd</sup> Sector which sits within the LA and works closely with emotionally healthy children and young people and families team.**

# Innovations, Investment, Progress



- Cheshire East ICP have been part of the national programme to introduce tele health and virtual wards for COVID patients who need careful monitoring but can remain at home with some basic daily checks such as temperature and oxygen levels



- CWP produced a special edition of its annual [Book of Best Practice](#) to help share the innovations and successes that have resulted from working together to address Covid pressures.
- CWP's Child and Adolescent Mental Health Services developed a 'Coping with COVID-19' online toolkit on our CAMHS website [www.mymind.org.uk](http://www.mymind.org.uk) – featuring emotional wellbeing materials.



- the Involvement, Recovery and Wellness Centre developed a YouTube channel to share helpful self-management strategies for people to put into action at home

# Innovations, Investment, Progress

## Emergency Department Development – Leighton

- work has started on a £15m two-storey building to expand the ED at Leighton Hospital
- the new building will cover more than 4,000 square metres over the two floors, will include a dedicated paediatric suite, mental health assessment rooms and a bereavement suite, as well as additional treatment rooms.



## Same Day Emergency Care & Intensive Care Unit Development – Macclesfield

- capital investment secured to improve the Same Day Emergency Care facility at Macclesfield District Hospital
- c£2m capital investment in Intensive Care Unit development (starts April 2021)





# Innovations, Investment, Progress



## New Hospital – Leighton

The Trust continues to work on plans for a new whole hospital build at Leighton

The strategic outline case is in development and proposals have been put forward to be considered for national funding

Building a new hospital offers the best value for money and can be done at a similar cost to carrying out extensive roof repair work



# Recovery

- **workforce resilience and further support for staff wellbeing is critical to successful recovery.** CWP is launching a dedicated service to provide urgent mental health and wellbeing support for all keyworkers who need additional support who are based in Cheshire and Wirral.
- **acute services are now reopening as COVID wards revert back to elective surgical activities.** Diagnostics including imaging and endoscopy are progressing well. Upgrade of intensive care unit at Macclesfield will enable it to safely manage Covid-19 and non-Covid19 patients in one location
- **system approach to elective recovery.** Aspiration to use all available capacity which will mean that patients may be offered their operations at other hospitals or in the private sector
- **accelerated discharge project.** CWP co-ordinating an accelerated discharge programme, looking at the wider non-clinical determinants of delayed discharge (e.g. access to appropriate housing) for mental health patients and how to resolve these issues in a timely manner.

**two Children's Hubs are now open in Children Centres and offer local blood tests (rather than hospital attendance), as well as multidisciplinary team meetings where professionals discuss complex children's needs with an agreed plan**

**aim is to also expand End of Life services for home care, IV antibiotic care at home as well as other services where patients currently have to travel out of area (e.g. insulin pumps)**

**community service IT review being undertaken to ensure all community staff have access to the most up to date systems and equipment to enable them to link into the GP system, as well as good internet in people's own homes**

**mental health crisis support and community services. The urgent 24/7 mental health helpline for people of all ages will continue to function indefinitely and be promoted heavily across communities.**

**further investment in mental health adult community services is set to take place under the NHS Long Term Plan key to developing a more preventative approach and supporting people to live well in their community**

**Primary Care will continue to play key roles in vaccinating over 70% of the total vaccination programme but will now also start to follow up the delayed long-term condition reviews**

# Learning and the future

- all partners will look to ensure that the benefits and positive learning in service delivery during this period i.e. better use of technology, agile working, working more closely with partners are learned and embedded into practice – which will be a key part of restoration and recovery of services
- closer partnership working during the pandemic period lays excellent foundations for further integration and innovation of services
- continuing to deliver the response to Covid-19, progressing work to restart to get back to BAU whilst also planning for the future in line with the intent of the White paper

# On the horizon – White Paper

- will be attending April OSC meeting to update further on the White paper

## Overview: Integration and Innovation - Working together to improve health and social care for all

**Bill is designed around three important principles:**

- any legislation should solve practical problems
- avoid a disruptive top down reorganisation
- and have broad consensus within the system.

**Subject to Parliamentary business, the legislative proposals for health and care reform outlined in this paper will begin to be implemented in 2022.**

**3 proposals for legislation:**

- Working together and supporting integration
- Reducing bureaucracy
- Enhancing public confidence and accountability.

**Plus a range of additional proposals around social care, public health and safety & quality**





# On the horizon – White Paper



## Integrated Care Systems

Establish statutory ICS in each ICS area made up of an ICS NHS Body and a separate ICS Health & Care Partnership (NHS, local government and partners)

## Duty to Collaborate

Place a duty to collaborate on NHS organisations (both ICSs and providers) and local authorities.

## Triple Aim

Shared duty to have regard to the 'Triple Aim' of **better health and wellbeing for everyone**, **better quality of health services for all individuals**, and **sustainable use of NHS resources**.

## Joint committees

Allow ICSs and NHS providers to create joint committees

## Collaborative Commissioning

Remove barriers and streamline and strengthen the governance for collaborative and aligned decisions

## Joint Appointments

Introduce a specific power to issue guidance on joint appointments between NHS Bodies; NHS Bodies and local authorities; NHS Bodies and Combined Authorities to support the development and delivery of integrated care